

**ST. MATTHEWS PARADE, NORTHAMPTON, NN2**

**£250,000 Offers in the region of**



Chelton Brown have the pleasure in offering this, three bedroom 1930-1950's bay fronted terrace house suitable for both first time buyers and investors, to the market.

The property briefly comprises of; entrance hallway, lounge, open plan kitchen/dining room with sliding patio doors leading to the garden. To the first floor are two double bedrooms, one single bedroom and a family bathroom.

The back garden has a patio area leading to a laid lawn and a double garage, accessed via a service road.

Further benefits include; no upward chain, double glazing and gas central heating.

EPC rating E

- Online Auction
- No Chain!
- Double Garage
- Decent Sized Back Garden
- Open Plan Kitchen/Dining Room
- Bay Fronted
- Sought After Location
- Front Garden
- Three Bedrooms
- EPC E - Council Tax band C



## ST. MATTHEWS PARADE, NORTHAMPTON, NN2

Lounge 15'0" x 12'2"



Bedroom Two 12'1" x 9'11"



Kitchen 12'10" x 6'5"



Bathroom 6'6" x 5'5"



Dining Room 9'9" x 10'4"



Bedroom Three 12'6" x 6'2"

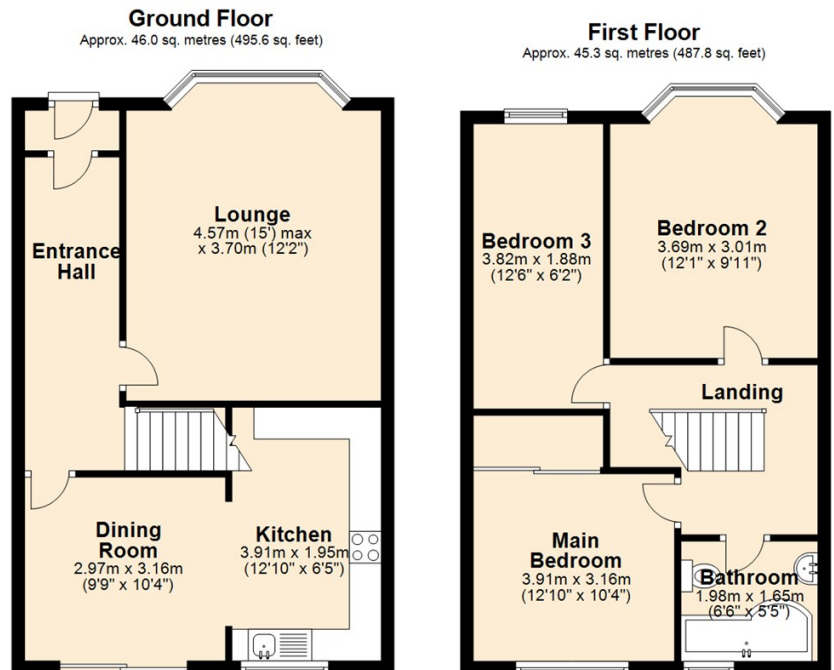
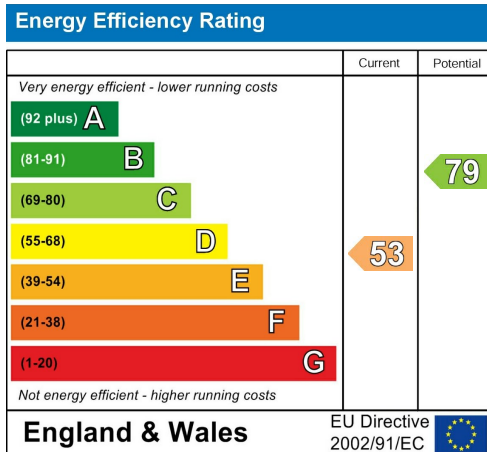


Main Bedroom 12'10" x 10'4"



# ST. MATTHEWS PARADE, NORTHAMPTON, NN2

Price £250,000



Total area: approx. 91.4 sq. metres (983.4 sq. feet)

Floor Plan measurements are approximate and are for illustrative purposes only. While we do not doubt the floor plans accuracy, we make no guarantee, warranty or representation as to the accuracy and completeness of the floor plan. You or your advisors should conduct a careful, independent investigation of the property to determine to your satisfaction as to the suitability of the property for your space requirements. Plan produced using PlanUp.

